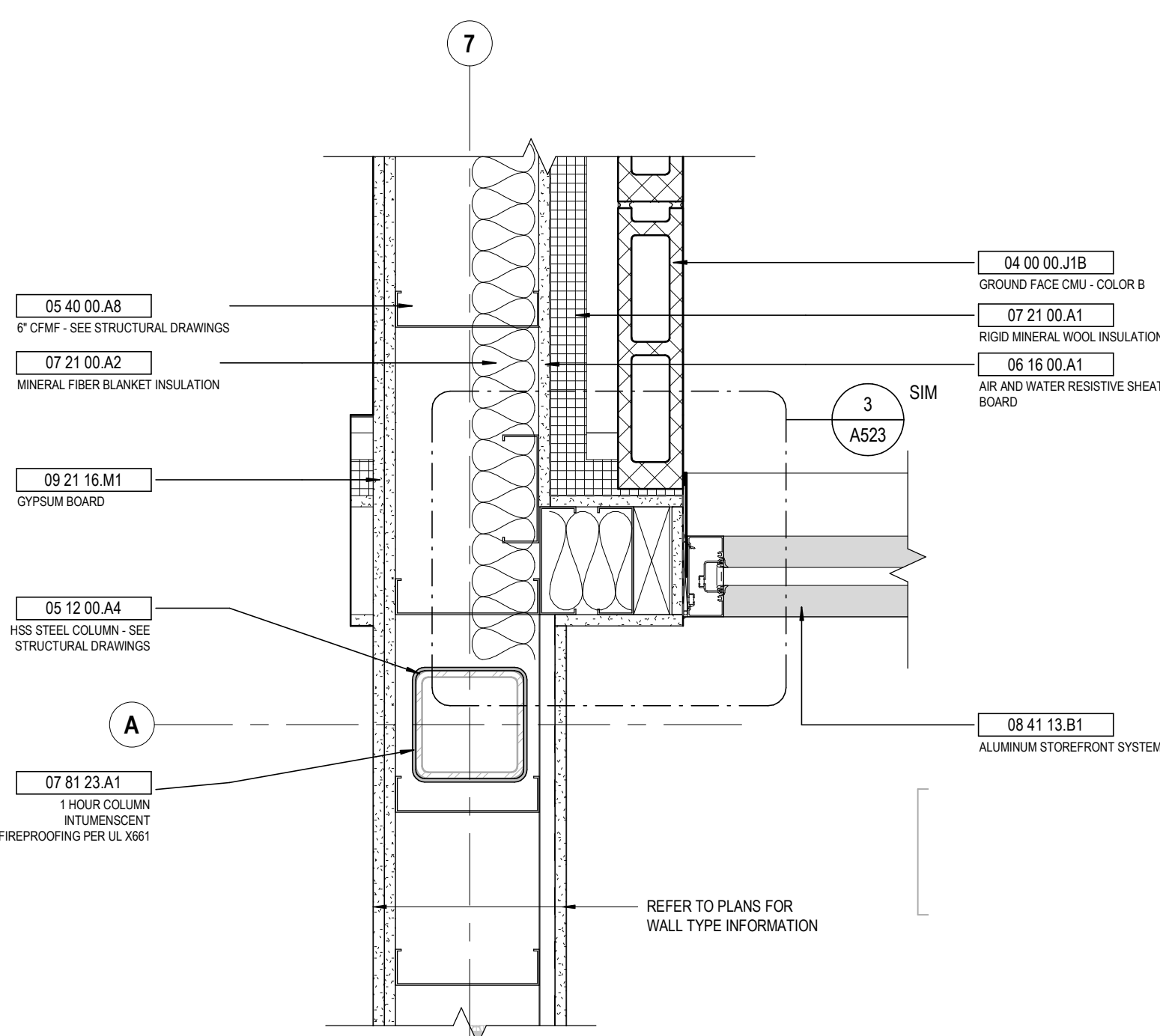
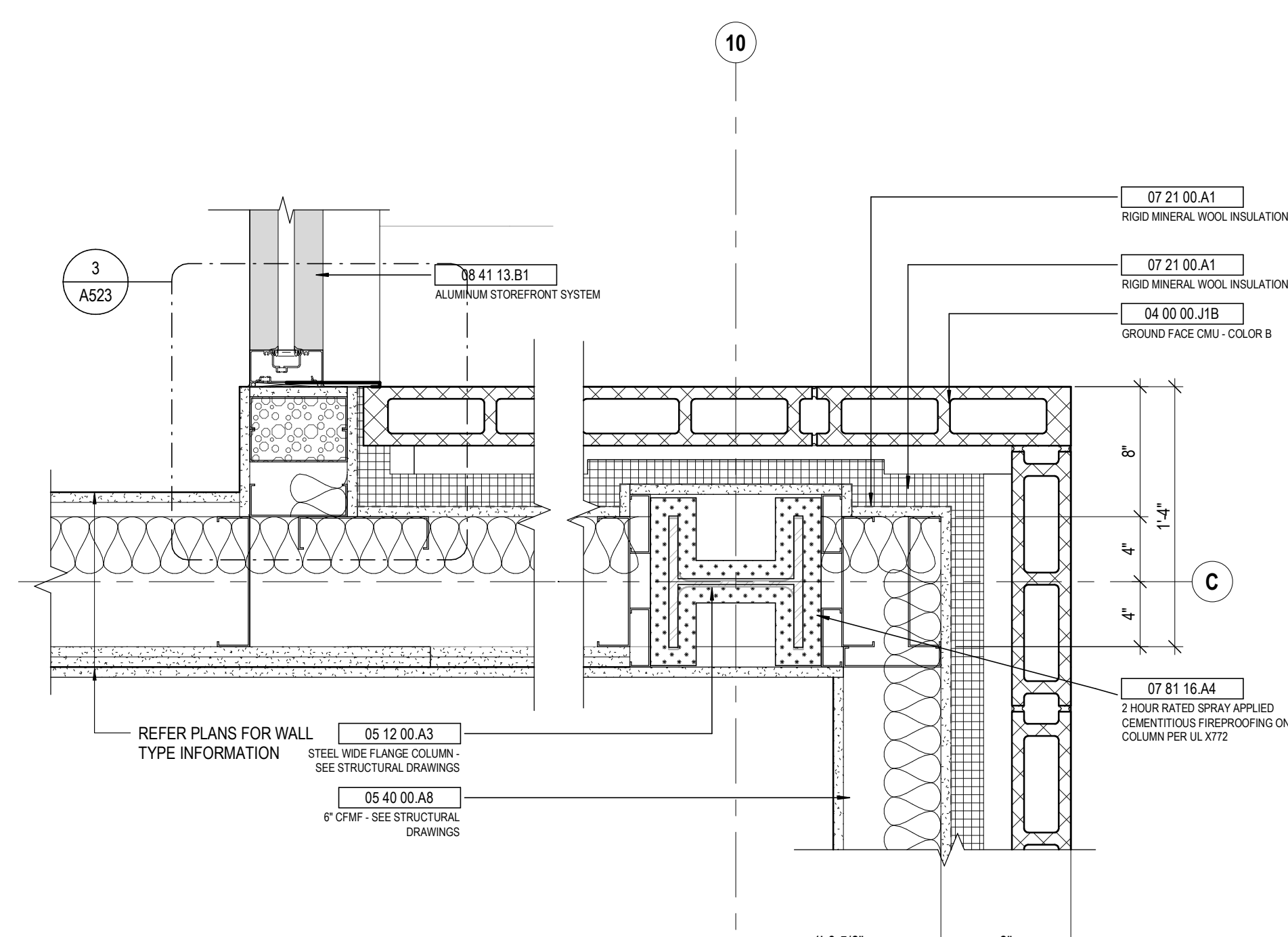


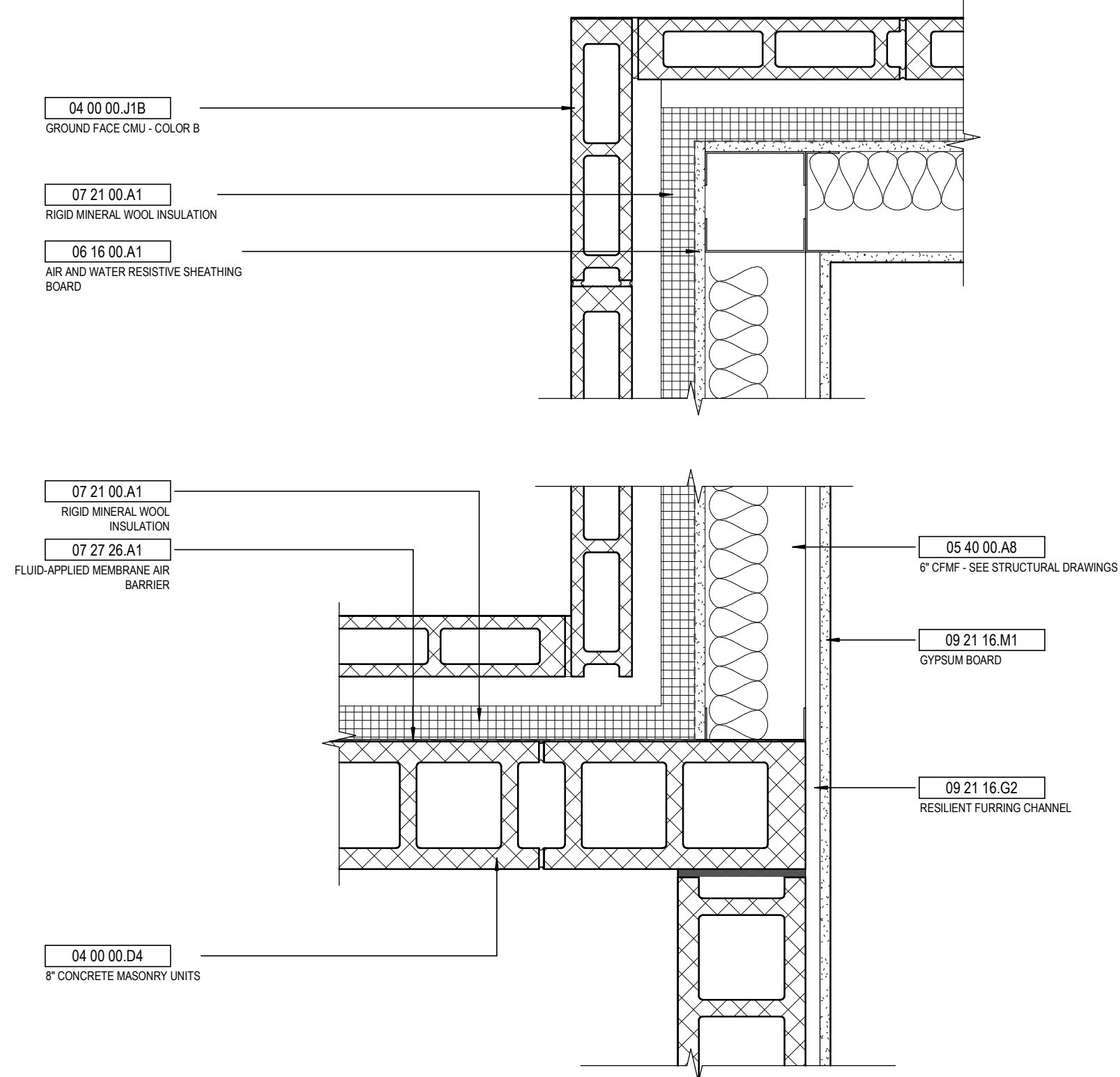
9 DETAIL GROUND FACE CMU - OUTSIDE AND INSIDE CORNERS
1 1/2" = 1'-0" REF: 1 / A001



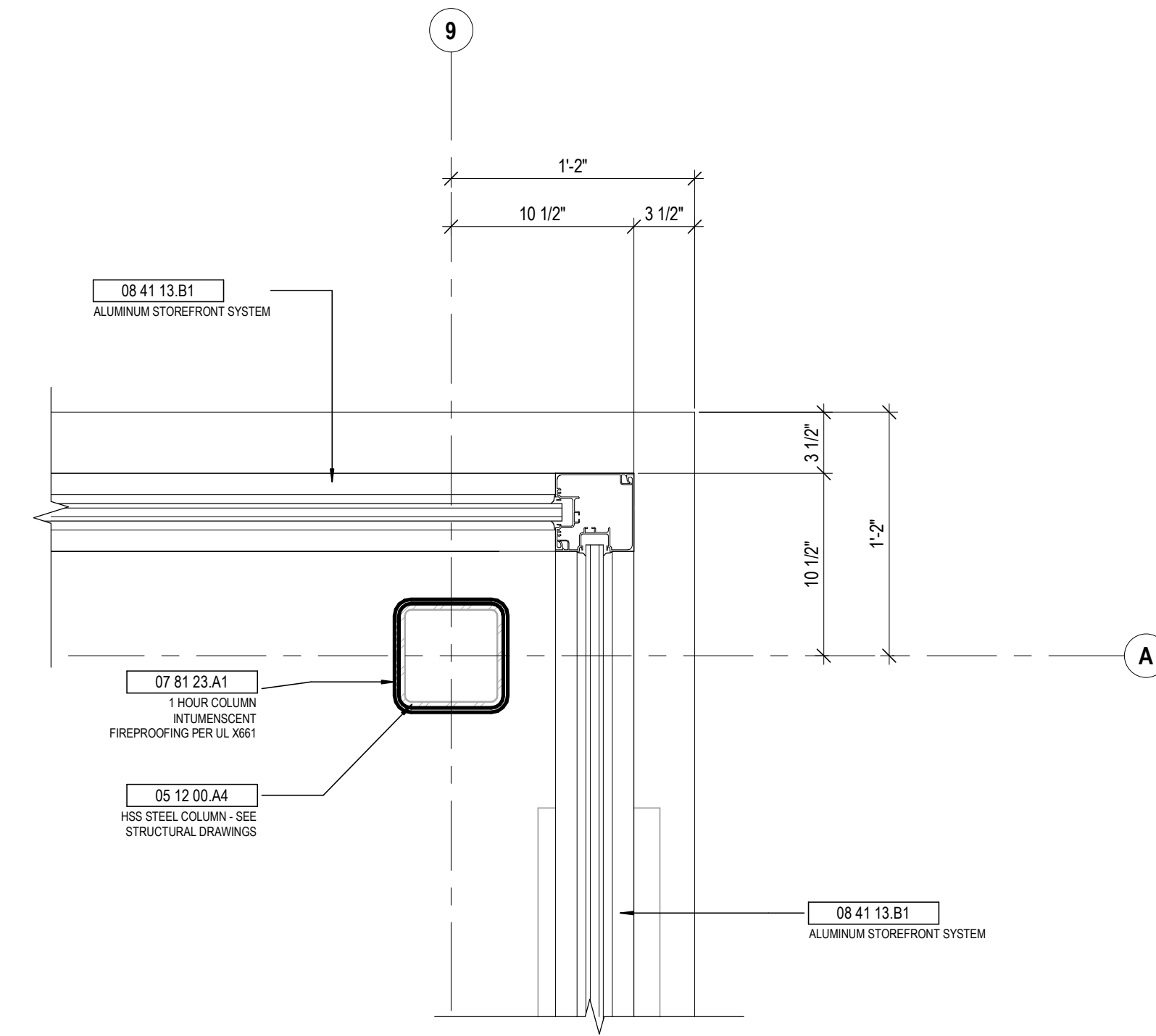
6 DETAIL GROUND FACE CMU / STOREFRONT JAMB
1 1/2" = 1'-0" REF: 1 / A001



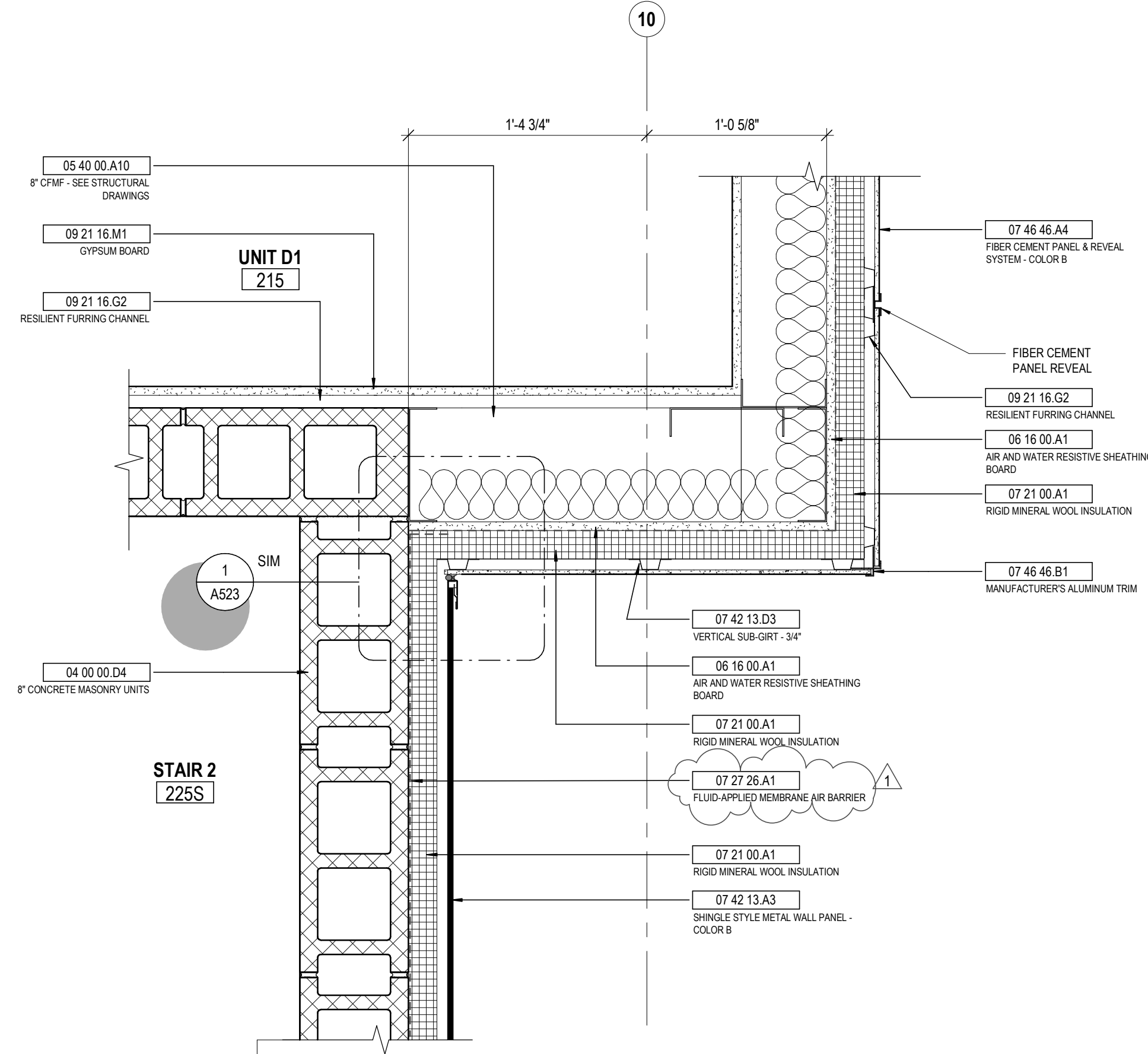
3 DETAIL GROUND FACE CMU - JAMB DETAIL
1 1/2" = 1'-0" REF: 1 / A001



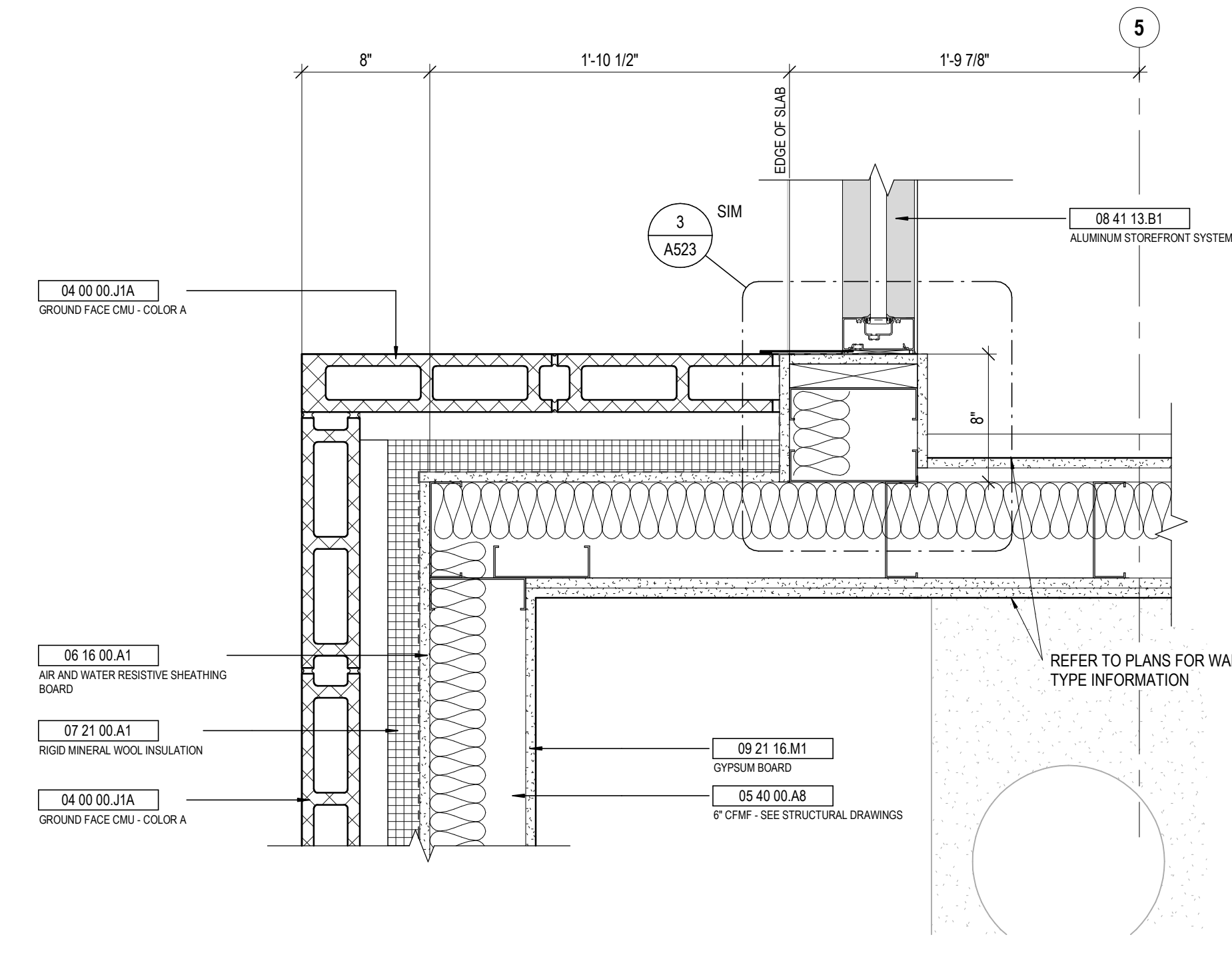
8 DETAIL CMU TO METAL STUD TRANSITION @ GROUND FACE CMU EXTERIOR
1 1/2" = 1'-0" REF: 1 / A001



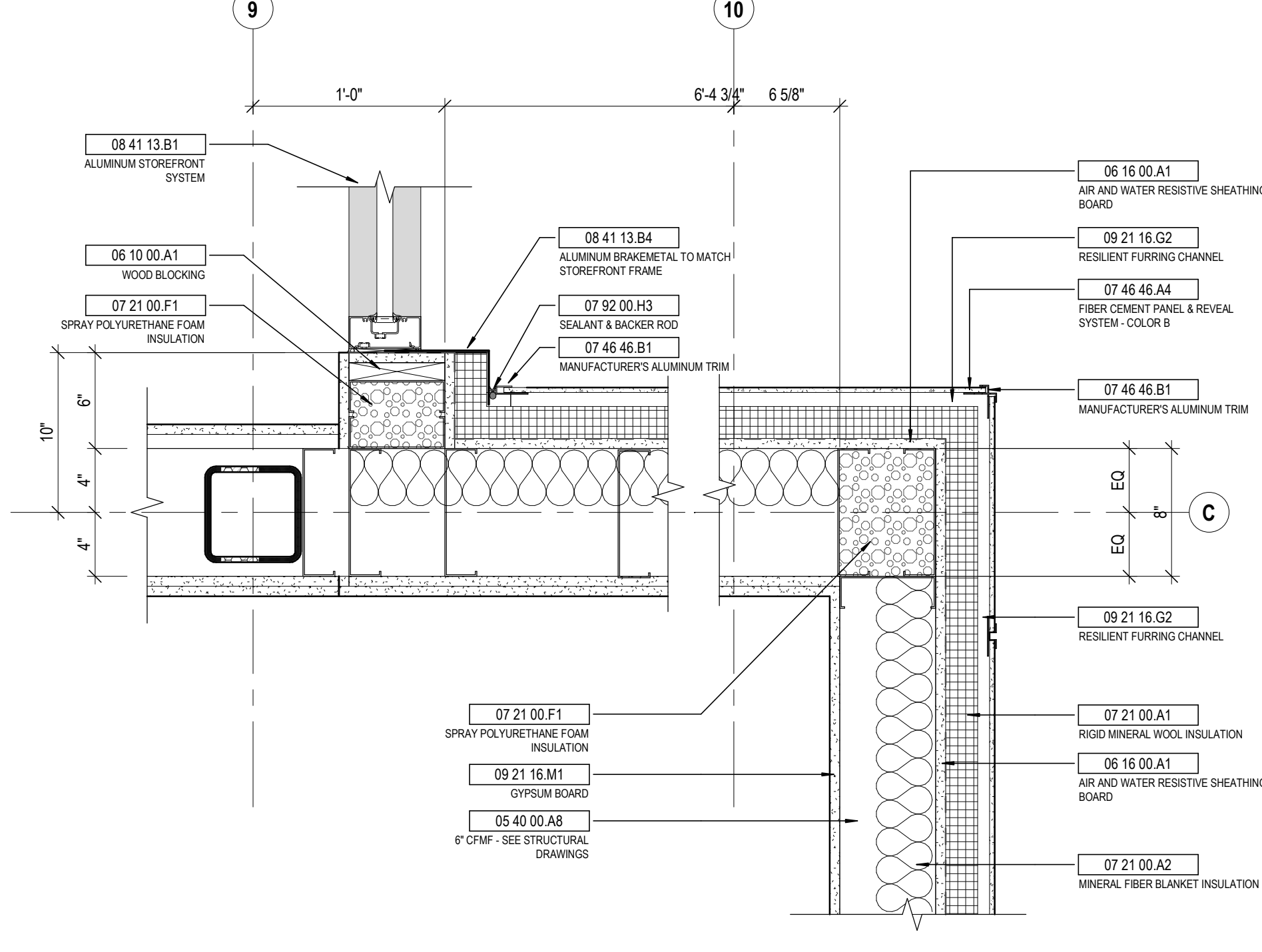
5 DETAIL ALUMINUM STOREFRONT CORNER
1 1/2" = 1'-0" REF: 1 / A001



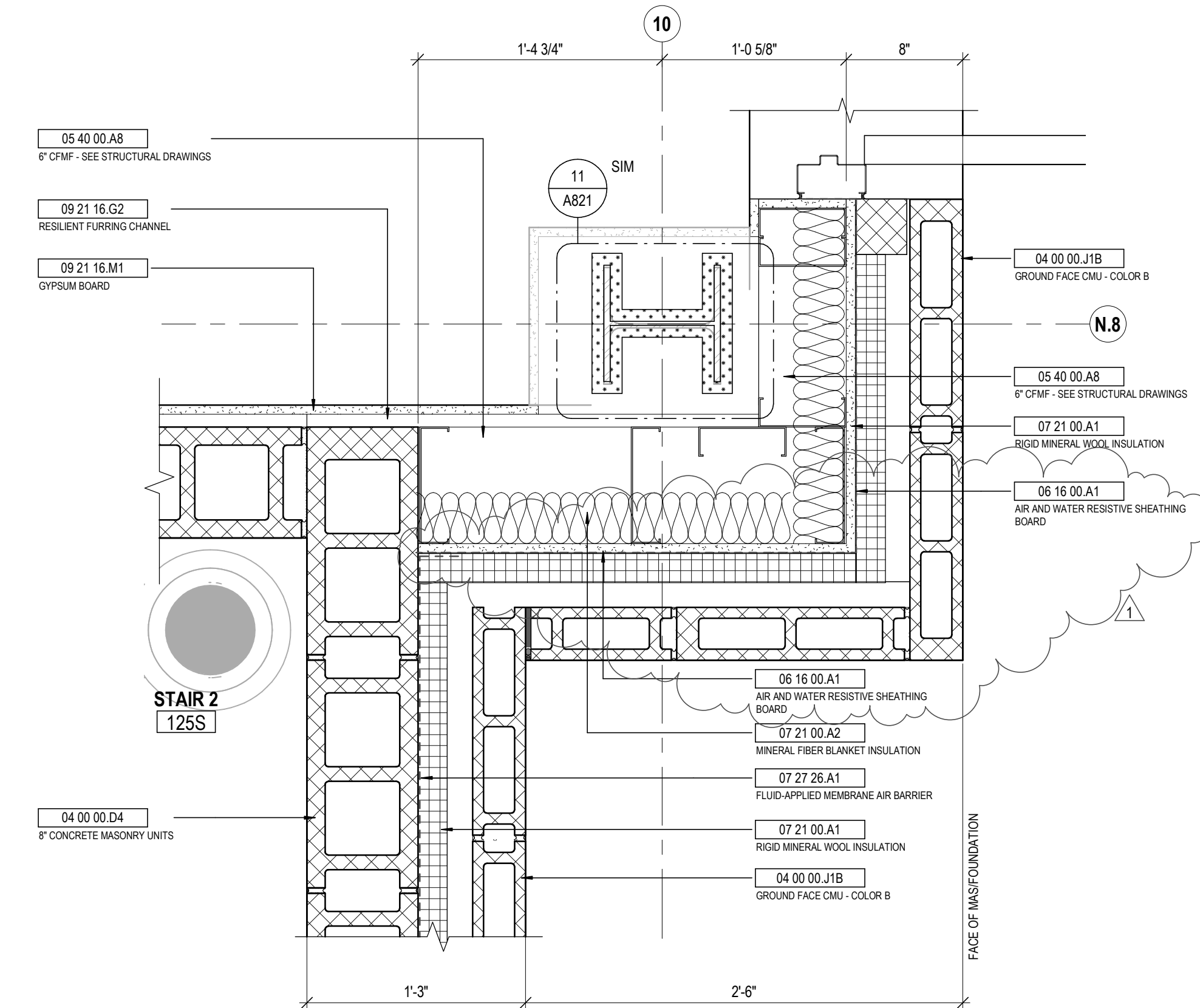
2 DETAIL OUTSIDE CORNER FIBER CEMENT, INSIDE CORNER SHINGLE TO FIBER CEMENT
1 1/2" = 1'-0" REF: 1 / A002



7 DETAIL GROUND FACE CMU - JAMB DETAIL
1 1/2" = 1'-0" REF: 1 / A001



4 DETAIL OUTSIDE CORNER FIBER CEMENT TO STOREFRONT JAMB
1 1/2" = 1'-0" REF: 1 / A002



1 DETAIL CMU - CFMF TO CMU BACKUP TRANSITION
1 1/2" = 1'-0" REF: 1 / A001

STATE OF KENTUCKY APPROVAL

KEYNOTE LEGEND

KEY VALUE	KEYNOTE TEXT
04 00 00.04	8" CONCRETE MASONRY UNITS
04 00 00.04	GROUND FACE CMU - COLOR A
04 00 00.04	GROUND FACE CMU - COLOR B
05 12 00.03	STEEL WIDE FLANGE COLUMN - SEE STRUCTURAL DRAWINGS
05 12 00.04	HSS STEEL COLUMN - SEE STRUCTURAL DRAWINGS
05 40 00.08	6" CFMF - SEE STRUCTURAL DRAWINGS
05 40 00.10	6" CFMF - SEE STRUCTURAL DRAWINGS
06 10 00.01	WOOD BLOCKING
06 16 00.01	AIR AND WATER RESISTIVE SHEATHING BOARD
07 21 00.01	RIGID MINERAL WOOL INSULATION
07 21 00.02	MINERAL FIBER BLANKET INSULATION
07 21 00.01	SPRAY POLYURETHANE FOAM INSULATION
07 27 26.01	FLUID-APPLIED MEMBRANE AIR BARRIER
07 42 13.03	SHINGLE STYLE METAL WALL PANEL - COLOR B
07 42 13.03	VERTICAL SUB-GIRT - 3/4"
07 46 46.04	FIBER CEMENT PANEL & REVEAL SYSTEM - COLOR B
07 46 46.01	MANUFACTURER'S ALUMINUM TRIM
07 81 16.04	2 HOUR RATED SPRAY APPLIED CEMENTITIOUS FIREPROOFING ON COLUMN PER UL X772
07 81 23.01	1 HOUR COLUMN INTUMESCENT FIREPROOFING PER UL X661
07 92 00.01	MASONRY CONTROL JOINT
07 92 00.03	SEALANT & BACKER ROD
08 41 13.01	ALUMINUM STOREFRONT SYSTEM
08 41 13.04	ALUMINUM BRACKETMETAL TO MATCH STOREFRONT FRAME
08 21 16.02	RESILIENT FURRING CHANNEL
08 21 16.01	GYPSUM BOARD

#	DATE	CHANGE DESCRIPTION
1	02/14/2020	ADDENDUM #1

NKU
NORTHERN KENTUCKY UNIVERSITY

NEW RESIDENCE HALL
KENTON DRIVE & CARROLL DRIVE
HIGHLAND HEIGHTS, KY 41099
FOR
NORTHERN KENTUCKY UNIVERSITY

MOODY-NOLAN

434 MADISON AVENUE
COVINGTON, KY 41011

PHONE: (859) 957-1277
FAX: (859) 957-1280

DRAWING TITLE:
EXTERIOR DETAILS

CUYIA'S J. MOODY
REGISTERED ARCHITECT
COMMUNITY ARCHITECT

JANUARY 30, 2020

DRAWN BY: Author
CHECKED BY: Checker

#18237

A522

BID & PERMIT SUBMITTAL